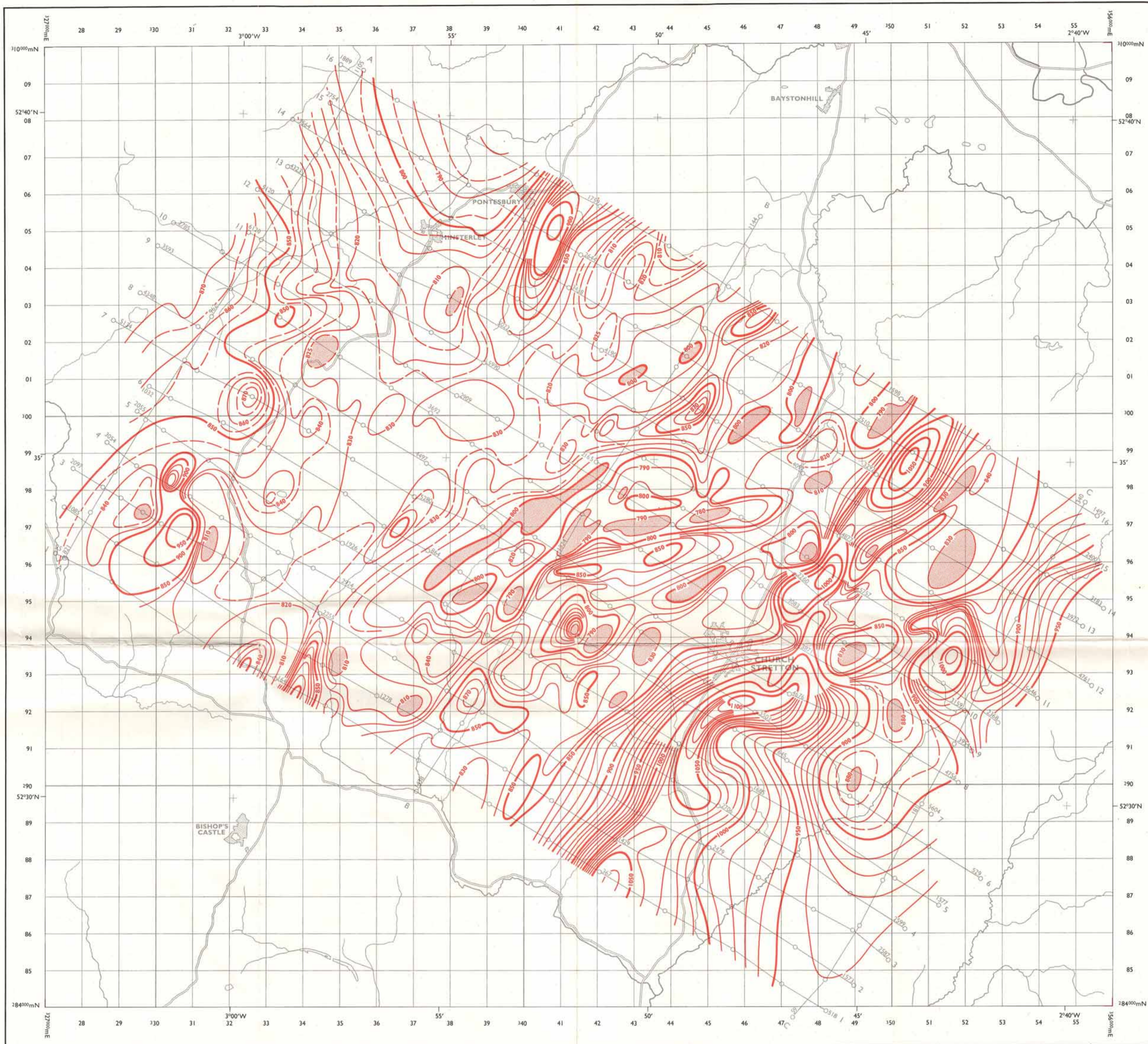


TOTAL MAGNETIC INTENSITY MAP

CHURCH STRETTON AREA



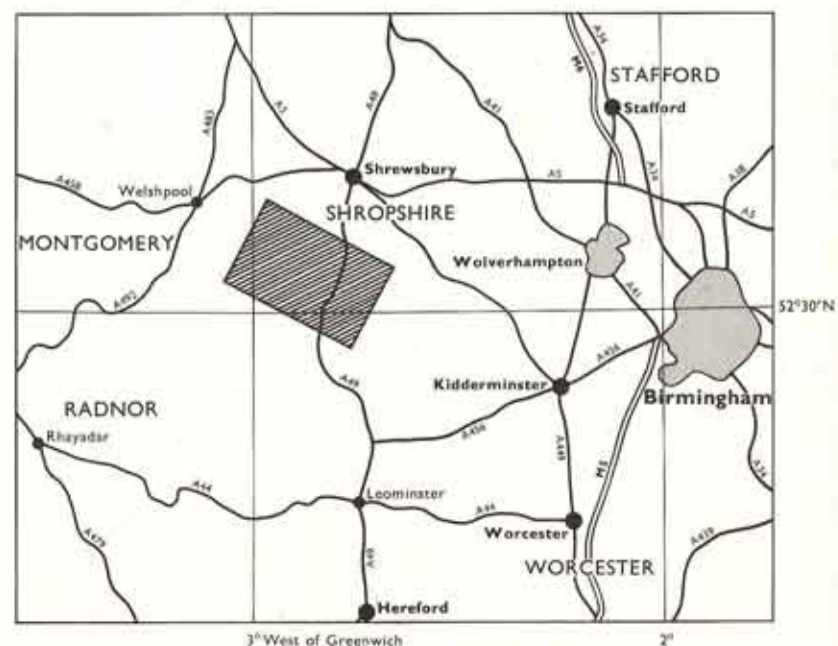
AEROMAGNETIC TEST SURVEY JANUARY 1969.

SCALE 1:63,360



Flown and compiled by
FAIREY SURVEYS LTD.,
Reform Road, Maidenhead, Berkshire.

LOCATION DIAGRAM



REFERENCE

Mean terrain clearance	500 feet
Mean flight line spacing	1 kilometre
Mean tie lines spacing	10 kilometres
Minimum contour interval	5 gammas
Flight lines numbered	1 to 16
Tie line lettered	A, B, C
Points plotted from 35mm. photography	2000
Magnetic contours	50, 10, 5
Enclosed areas of low intensity	

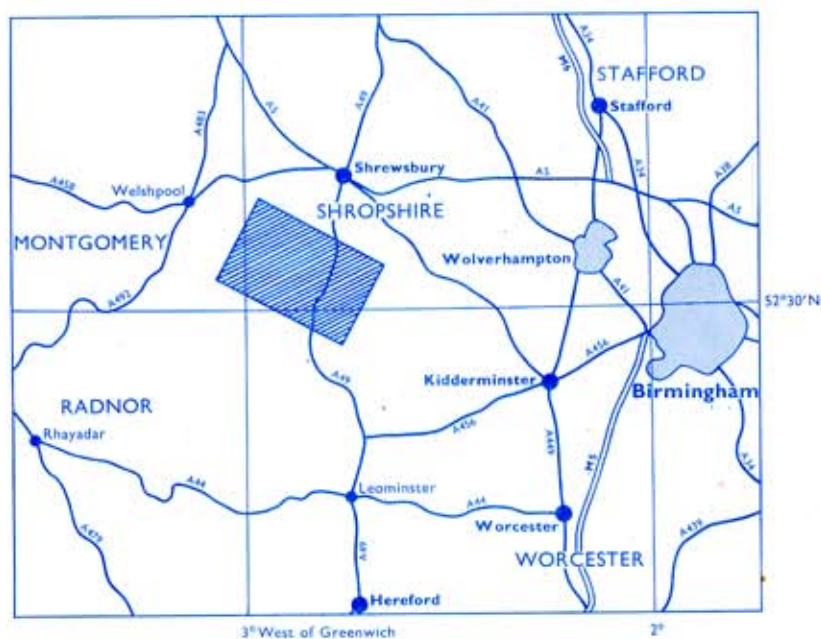
NOTE:- Add 47000 gammas at SW corner of area (FLI-TLC) for earth's total magnetic field intensity.
Corrected for a regional increase in total force of 2.1728 gammas per km. to Grid North and 0.259 gammas per km. to Grid West.

COMPILATION NOTE

Major topographical detail taken from 1" to 1 mile Ordnance Survey Maps - Sheets 117, 118, 128 & 129 with the sanction of the Controller of H.M. Stationery Office.

Fairey Surveys Ltd.

CHURCH STRETTON GEOPHYSICAL SURVEY



A Total Magnetic Intensity Contour Map of
a Selected Test Area in Shropshire U.K.

Scale 1 inch to 1 mile

Flown and Compiled by
FAIREY SURVEYS LTD
REFORM ROAD
MAIDENHEAD BERKSHIRE,
ENGLAND.

Technical Specifications

Aircraft: Dove MK 6

Magnetometer : Barringer 101B Proton

35mm Positioning Camera:
De Havilland MK7

Radioaltimeter: STR 54B

Mean Terrain Clearance : 500 feet

Mean Flight Line Spacing : 1 Kilometer

Mean Tie Line Spacing : 50 Kilometers

FLOWN AND COMPILED

JANUARY 1969