



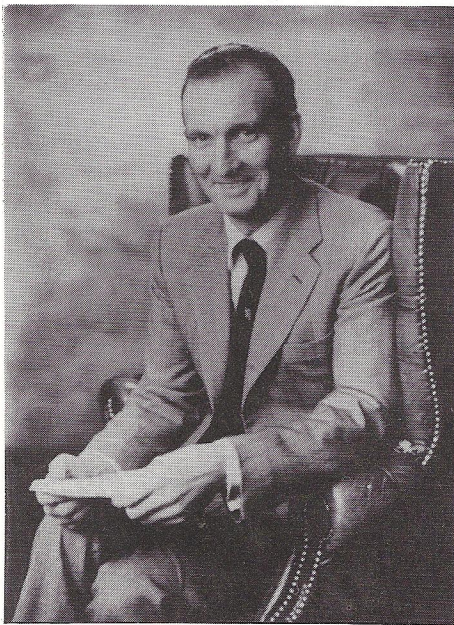
Clyde Surveys

Newsletter 25

News of developments in the world of surveying and mapping

DECEMBER 1981

RICS ELECTS NEW DIVISIONAL PRESIDENTS



Lawrence Scott, FRICS, Managing Director of Clyde Surveys Limited has been appointed President of the Land Surveyors Division of the Royal Institution of Chartered Surveyors — 1981/82.

Mr. Scott is a Fellow of The Royal

Institution of Chartered Surveyors, and also of the Royal Geographic Society. He is also an Associate of the Institution of Surveyors in Australia, a Member and past Treasurer of the British Cartographic Society, and a Member and past Council Member of the Photogrammetric Society. He has a Diploma in Management Studies and is a Fellow of the British Institute of Management.

He has been an examiner for the RICS professional examinations, and was a member of the working party which reviewed the Land Surveyors' syllabus. He was Chairman of the working party which reviewed graduate entry and future objectives of the Division in 1978, and from 1978 to 1981 was chairman of the Land Surveyors Practice and Management Committee. He has been instrumental in the production of new survey specifications for the RICS, which have received world-wide recognition.

FRANKFURT BOOK FAIR 1981

Assemble 285,000 books in many languages; 5,100 publishers from 52 countries; put them together in one of the world's largest exhibition complexes and surround them over a six day period by nearly one million visitors and you have the Frankfurt Book Fair.

For the last four years Clyde Surveys' leisure map products and cartographic services to publishers have been exhibited on an increasing scale. At the 1981 Fair the Clyde stand was inundated with enquiries for the existing titles in the range, plus requests for many new titles. In order to deal efficiently with this demand, a publishing division has been created within Clyde marketing team to research new titles and to optimise the worldwide distribution arrangements. Already, the range is being extended to include Singapore, also Athens and the Peloponnese and many other tourist areas are being researched with a view to producing further new titles.

Today tourism is truly international and distribution arrangements bring us into contact with wholesalers in the United States of America, most European countries plus Malaysia, China, Indonesia, Egypt, Mediterranean holiday resorts and of course the United Kingdom.

OBITUARY

Sadly, we have to announce the death of J.W. (Jim) Hill at Porthcawl on 12th November 1981 aged 68.

Jim Hill worked for Fairey Surveys over a period of 30 years, up to his retirement in 1978, in a number of managerial capacities. He was overseas project manager in Thailand and Iran for a number of years as well as being UK Sales Manager

for 12 years up until his retirement.

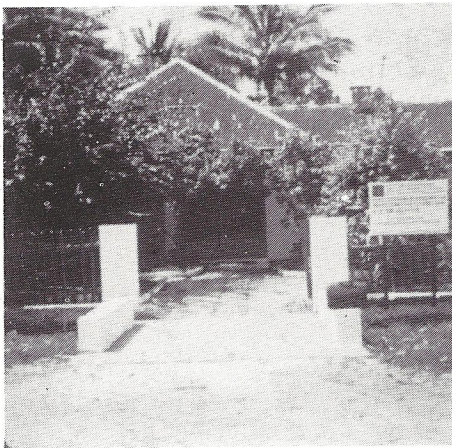
He had been connected with surveying and mapping all his working life and served throughout the Second World War in the Royal Engineers (Survey). Jim Hill will be sadly missed by all those of the surveying fraternity who knew him. He is survived by his wife Brenda, son Peter (in New Zealand) and daughter Janet.

INDONESIAN TRANS-MIGRATION PROGRAMME

An interim report

Clyde Surveys Limited was awarded a contract by the Government of Indonesia, Directorate General of Housing, Building, Planning and Urban Development, on 6th January 1981. The contract is to undertake outline planning studies followed by detailed enquiry of settlement units, as part of the Indonesian Transmigration Programme.

Clyde Surveys has drawn together a multi-disciplinary team involving staff from Robert Matthew, Johnson-Marshall and Partners, Dalgety Agricultural Development International Limited, Binnie and Partners and PT Tricon Jaya and the range of professional expertise covers Land Surveying, Road Design, Soil Science, Agronomy, Hydro-Geology, Regional Planning, Sociology, Forestry, Land Use, Cartography.

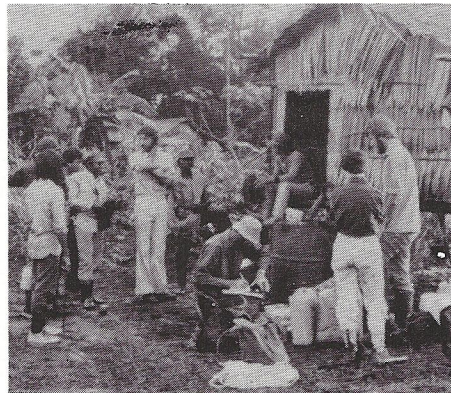


Local Headquarters

The team has established its headquarters accommodation at Banjarbaru, South Kalimantan, close to the airport at Syamsuddin Noor which is ideal logistically. The team leader Mr. John Hansell and his Indonesian counterpart, plus the Project

Officer from the Government of Indonesia and the cartographic production unit, work from Headquarters. In addition there is a team of locally recruited office staff under the Deputy Team Leader, Mr. John Cripwell, who is also responsible for the land survey teams working in the field.

Transportation requirements for the field staff are met by air, water and land from a combination of light aircraft, speedboats for personnel, local river-borne klotoks for stores and equipment. Although logging roads exist, where four wheel drive vehicles can travel, the best transportation is a pair of stout jungle boots.



Assistance from locals

Accommodation for the field parties is primarily available by arrangement with private logging companies. Food is purchased locally and Dyak staff are recruited to assist the field parties with 'rentisan - line-cutting' for the surveying observation teams.

The land survey teams are engaged on a programme of monumentation and traversing to demarcate, by boundary markers, the selected settlement areas for detailed engineering study plus traverse lines for final route selection by the road engineers.

Barometric height networks are being extended throughout the area to provide a dense vertical framework for subsequent contouring at two and half metre intervals.

Mapping supervision

The cartographic production unit at Headquarters under the supervision of MR. K.J. Ullersberger, is charged with compiling at a scale of 1:5000, a series of topographic map sheets from aerial photography at 1:20,000 scale using the horizontal and vertical data supplied by the land survey teams. At a later stage the cartographers will combine all the thematic data provided by the specialist study teams onto a series of additional maps mainly at 1:20,000 scale and depicting the thematic reports visually, for example SOILS, LAND USE, SLOPES, LAND SUITABILITY.

A significant factor in all multi-disciplinary projects is the economic phasing of specialist deployment to the site so that essentially early phases are completed in one discipline, before the team for the next stage is mobilised.

The logistic and personnel — movement arrangements are orchestrated from Clyde Surveys, Maidenhead. At peak periods up to 47 expatriate specialists and 80 Indonesian professionals are involved, operating in widely separated areas of this part of Borneo.

Future work

As at December 1981, the team leader reports that project objectives are well advanced and that the Indonesian Government has already broached the prospect of extending the work to be performed by the Clyde Surveys team.

NEW MAP SERIES FOR LIBYA 1:25,000 SCALE AT SHATT-AL-BADIN



New 1:25,000 series

Clyde Surveys has recently completed topographic mapping of an area of 740 square kilometres at a scale of 1:25,000 with contours at two and a half metres vertical interval. The mapping was produced for Dale International Limited (formerly Dalgety Agricultural Development International Limited, London), who have been engaged by the Libyan Secretariat of Agricultural Reform and Land Development to undertake the Shatt Al Badin Agricultural Studies.

The object of these studies is to investigate the natural resources and agricultural potential of the project area situated in the coastal belt between Gheminis and Ajdabiyah in Eastern Libya.

Two-phased project

The studies are divided into two phases, a Reconnaissance Phase covering the gross area and a Detailed Phase which concentrates on an area of 65 square

kilometres for project planning. The reconnaissance phase comprises topographical, soil and water resource surveys which will lead to the preparation of an overall agricultural development plan.

Supervised by Survey Department

In addition to the needs of the agriculturalists, the topographic mapping has also been closely monitored at each production stage by the Survey Department of Libya whose specified standards of accuracy and cartographic presentation were of a very high order. The following is an extract from the instructions concerning

the mapping of the Shatt Al Badin area:

These maps at 1:25,000 shall be used at the same time as a prototype for study and complements in order to prepare the right sample map sheet for the future mapping within the framework of "NATIONAL GEODETIC AND CARTOGRAPHIC PROJECT OF THE LIBYAN ARAB JAMAHARIYA".

The above statement has been the guiding principle throughout the mapping programme which has included aerial triangulation, photogrammetric plotting of detail and contours, map sheet compilation of machine plots and field edit data and cartographic presentation for final reprographic materials.

KODAK WASH-OFF FILMS STANDARD AT CLYDE

Clyde Surveys have many years of practical experience in combining photographic and drawing techniques. We have found, over the last 12 months, that the cost effective way to greater productivity from the drawing office staff is to use wash-off film.

The decision made, after careful research, to standardise on Kodastar wash-off films for reprographic work has provided substantial savings in materials and drawing time whilst ensuring good quality results.

In addition to servicing the internal demand from Clyde Surveys' map production division, the reprographics section offers a comprehensive photographic and reprographic service to outside organizations.

NEW 1982 CALENDARS

Readers are asked to note that the Clyde Surveys Calendar, traditionally published twice yearly, has been redesigned to accommodate the whole year for 1982.

BRITISH PHOTOGRAMMETRIC SOCIETY HONOURS CLYDE MANAGER



Presidents Medal 1981

The Photogrammetric Society awards list for 1981 included Clyde Surveys' Flight Trials Manager, Mr. F.J. Worton, FRPS, AMPA, AIP as recipient of the Presidents Medal from this year's President Mr. D. Proctor.

25 years with flight trials

The presidential citation referred to Freddie Worton's involvement with aerial photography over more than 40 years; starting in 1940 firstly as an air photographer/navigator for the 10 years immediately following the second World War and then as Flights Trials Manager from 1956 to the present day, all for the one company — Fairey Surveys now Clyde Surveys, during which he has been responsible for a great deal of research and development. Freddie has been a member of the Photogrammetric Society

since 1956 and served on the Council and the Technical Committee. He has been the United Kingdom correspondent to Commission I of the International Society for Photogrammetry and Remote Sensing and in 1980 was responsible, as Chairman, for the formation of Working Group 5 of that Commission, dealing with problems of aerial photography, film and film processing.

Freddie Worton is a Fellow of the Royal Photographic Society, an Associate of the Master Photographers Association and an Associate of the Institute of Incorporated Photographers. Since 1963 he has contributed many technical papers to the Photogrammetric Record, the Photographic Journal and is Editor of the Aerial Newsletter on behalf of the Aerial Photography Group of the Royal Photographic Society.

Editor's Note: During the lifetime of this award, two other members of the Fairey/Clyde Staff have received the President's Medal.

JUST IN TIME

Two members of our Environmental and Resources Consultancy Staff have just returned to the United Kingdom from Sudan in time for the festive season.

Trevor Beaumont and Pam Vass have spent the last several months in Juba working on remote sensing applications for a joint World Bank/ODA funded project managed locally by Booker Agricultural International Limited.

Our two specialists were using Landsat data bands 5, 7 and colour composites at a scale of 1:250,000. Interpretation of road drainage and settlement information was compiled into base maps. Further studies covered separately the rangeland potential also existing land use.

The work was carried out in accommodation provided by the Land Use and Physical Planning Unit of the Regional Ministry of Agriculture and Natural Resources.

Counterpart staff from the Sudan Government were given on-job training throughout and the secondment concluded with a seminar session, led by T.E. Beaumont.

The maps and reports will be finalised at Clyde Surveys headquarters by the authors, with cartographic support from our Drawing Office staff. Final delivery will be made to the Sudanese authorities in early 1982.

STOP PRESS

Clyde Surveys has been awarded the Sokoto Township Survey for the Federal Survey Department of Nigeria. Mapping will commence in early 1982 and comprises over 1600 sheets of 1:1000 scale mapping for a total contract price in excess of 1.5 million.